

pearl.

welt
P I X E L



PEARL. THEME DESIGN GUIDE.

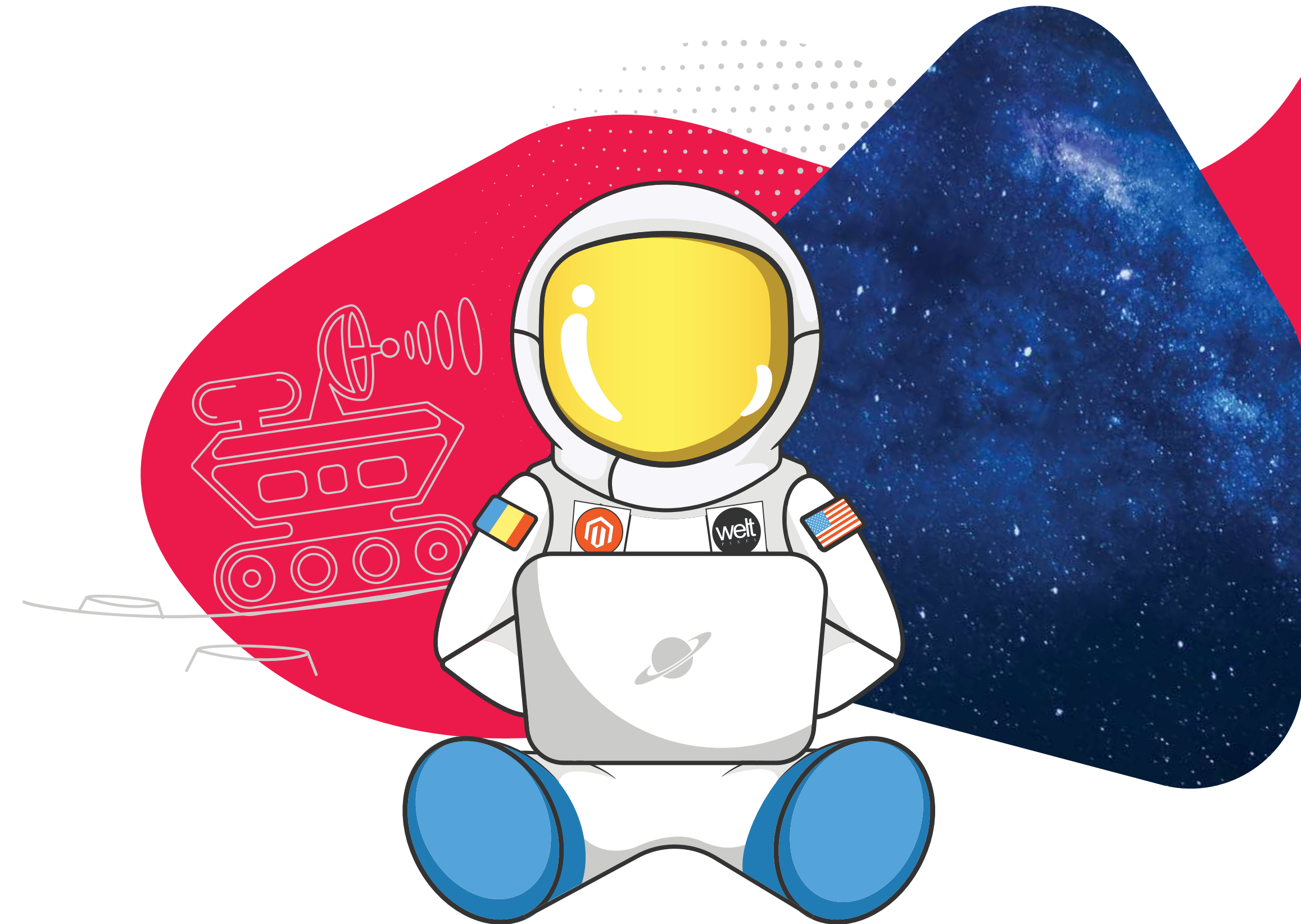
Please contact our **Customer Support** and provide your **Name** and **Order #**
to receive download access to the Pearl. Theme PSD files at the link bellow:

<https://support.weltpixel.com/hc/en-us/requests/new>

THANK YOU FOR YOUR DOWNLOAD!

We, at WeltPixel want to help you find the best solution for your online store and make it look astonishing. Let's start off by giving you some hints on how to use our .psd files. We made them user-intuitive by construction and we inserted hints directly in the files. Follow the instructions below if you are new to Adobe Photoshop to learn how to change images and colors.

-WeltPixel team



CONTENTS

Hompages

- V1 - Fashion Slider
- V2 - Fashion Parallax Hero
- V3 - Fashion Lookbook Style
- V4 - Fashion Company
- V5 - Fashion Full Page
- V6 - Fashion Parallax Scroll
- V7 - Fashion Classy
- V8 - Fashion Clean
- V9 - Furniture
- V10 - Accesories
- V11 - Single Product
- V12 - Glasses
- V14 - Apartment
- V 15 - Cosmetics

Category Pages

- 5 Column
- 4 Column
- 3 Column
- 2 Column
- 5 Column + Sidebar
- 4 Column + Sidebar
- 3 Column + Sidebar
- 2 Column + Sidebar

Product Pages

- Product Page V1
- Product Page V6
- Product Page V7
- Product Page V8

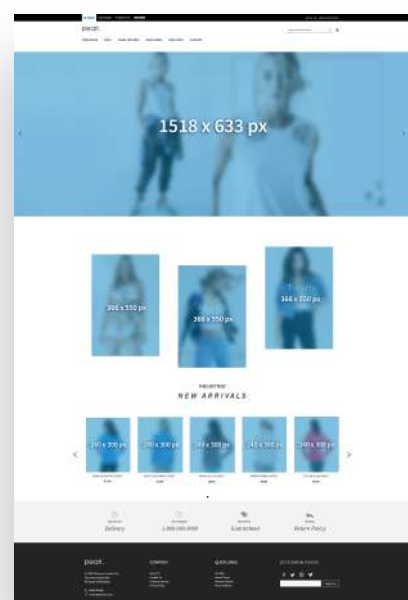
Headers

- Header V1
- Header V2
- Header V3
- Header V4

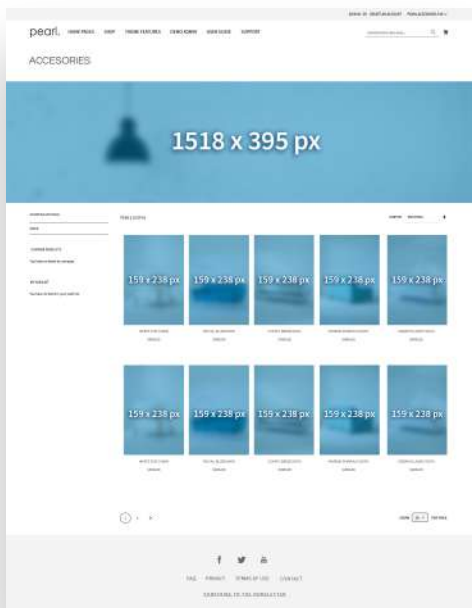
Footers

- Footer V10
- Footer V7
- Footer V2
- Footer V6
- Pre-footer V1

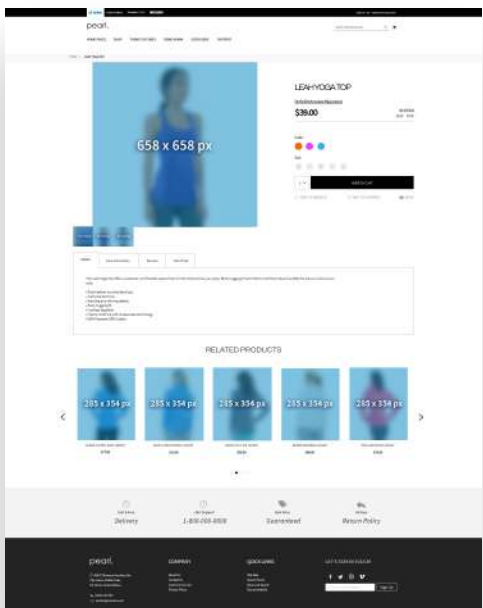
FILE PREVIEW.



Home Page



Category Page



Product Page




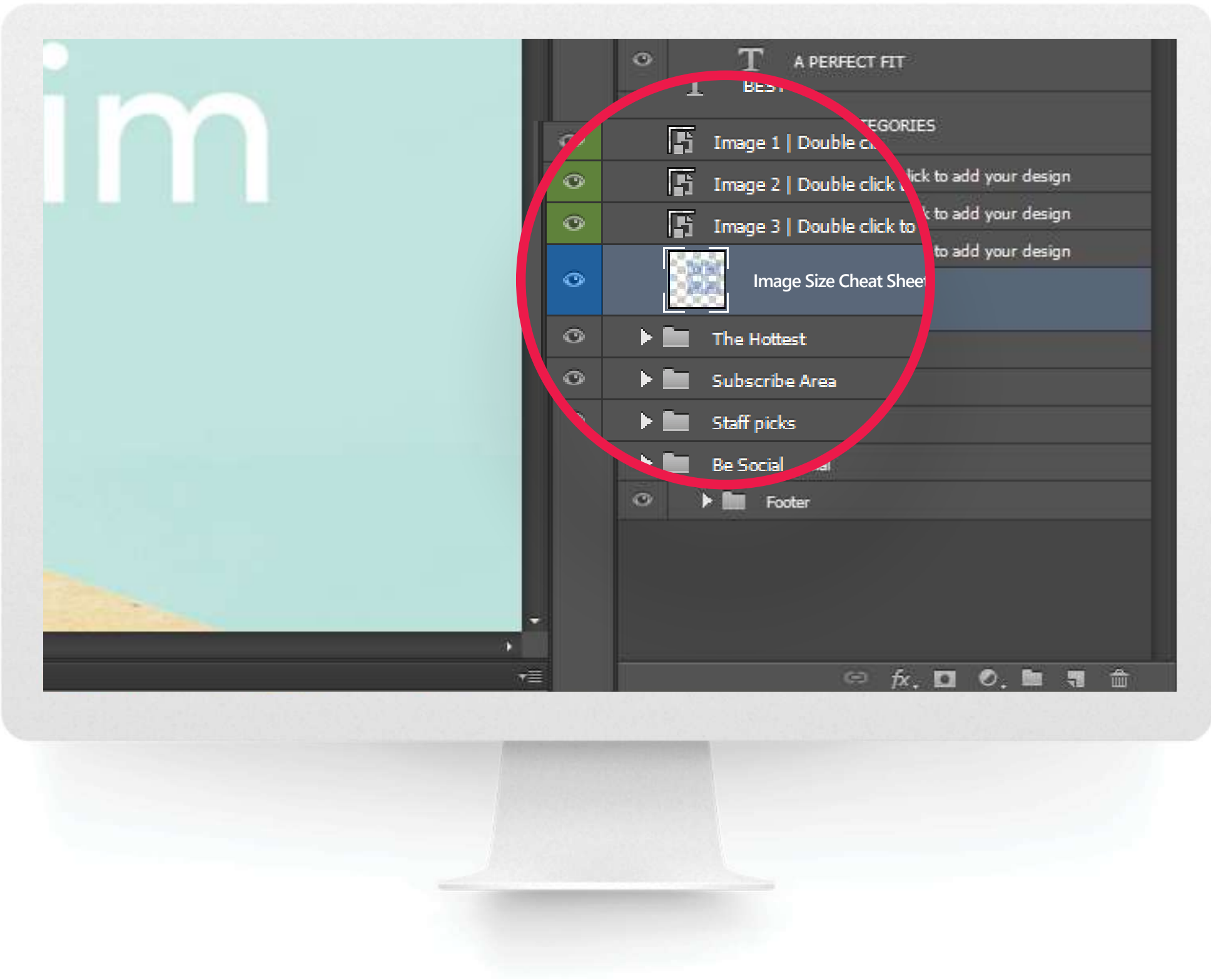
HOW TO MAKE THE MOST OUT OF THIS PACK.

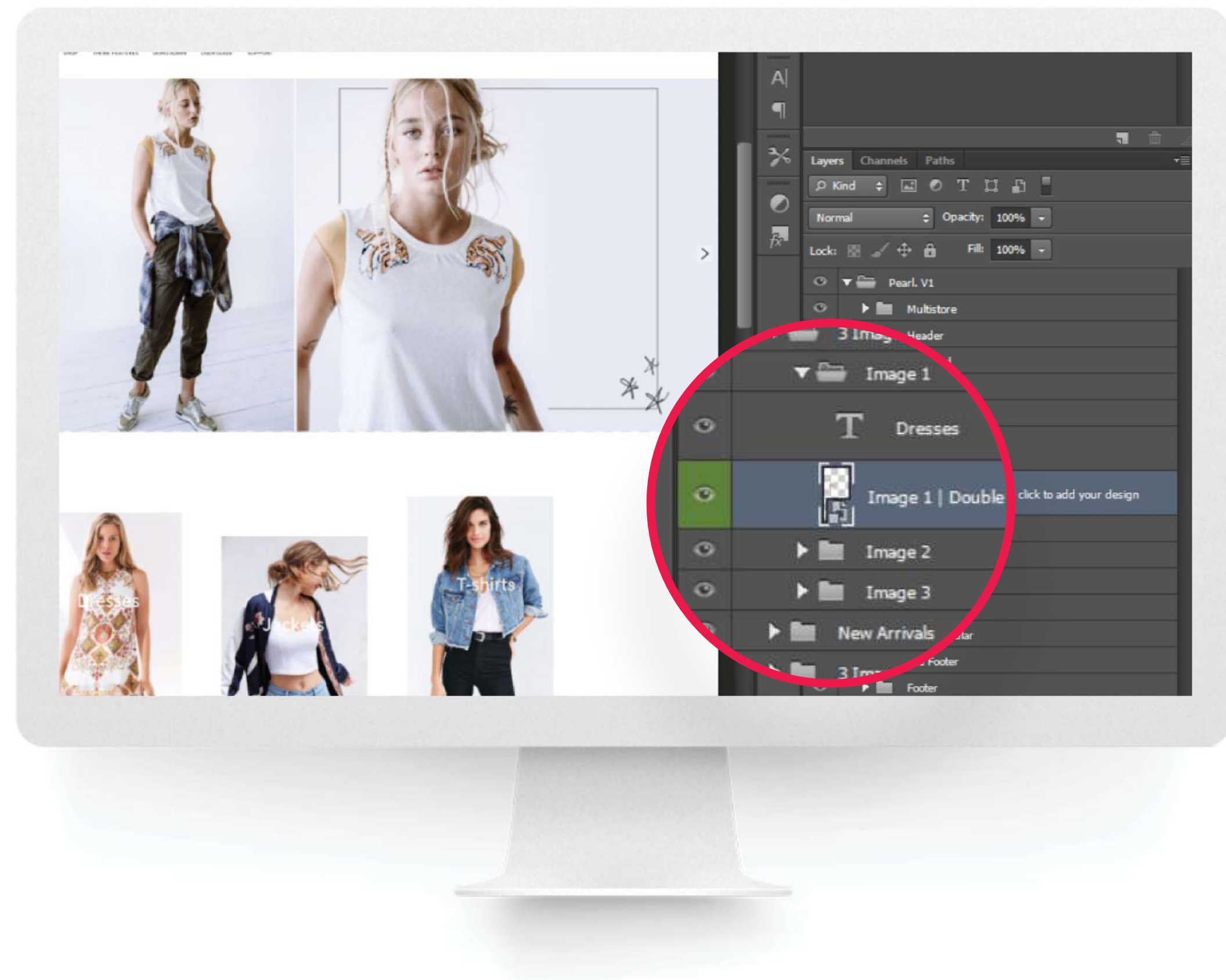
Let us guide you through these first easy steps. Once you unzipped the contents from the .zip file, locate the folder you are interested in. Each page presented in the contents section comes in a separate folder and you will notice that every folder contains the following

items

- Fonts folder
- 1 x .psd file of the page
- 1 x .jpg file of the page
- 1 x Image Size Cheat Sheet

1. Open the **Fonts** folder and **install** the containing fonts into your system. You are going to need them in order to properly work with the .psd file.
2. Once the first step is complete, you can open the .psd file in Adobe Photoshop. You will notice that every bit of information is neatly organized in layers and groups, and to make it easier for you, we even used color tags to mark certain layers to help you speed up the process.
3. The **Cheat Sheet** regarding the image sizes is marked with blue, but you must check the box located in the left side of the layer, to make it visible. A visible layer is marked with the  icon.
4. We marked the smart object layers in green and you can learn how to use them in the following page.
5. We strongly suggest you use images at the recommended size or at a larger size than specified in the Cheat Sheat.






CUSTOM IMAGES

HOW TO REPLACE CONTENTS OF A SMART OBJECT IN ADOBE PHOTOSHOP?

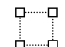
In order for you to have an easy time with our editable .pds files, we made them using smart objects, which means that it will be easy for you to change our images with your own. Follow the instructions below if you are new to Adobe Photoshop.

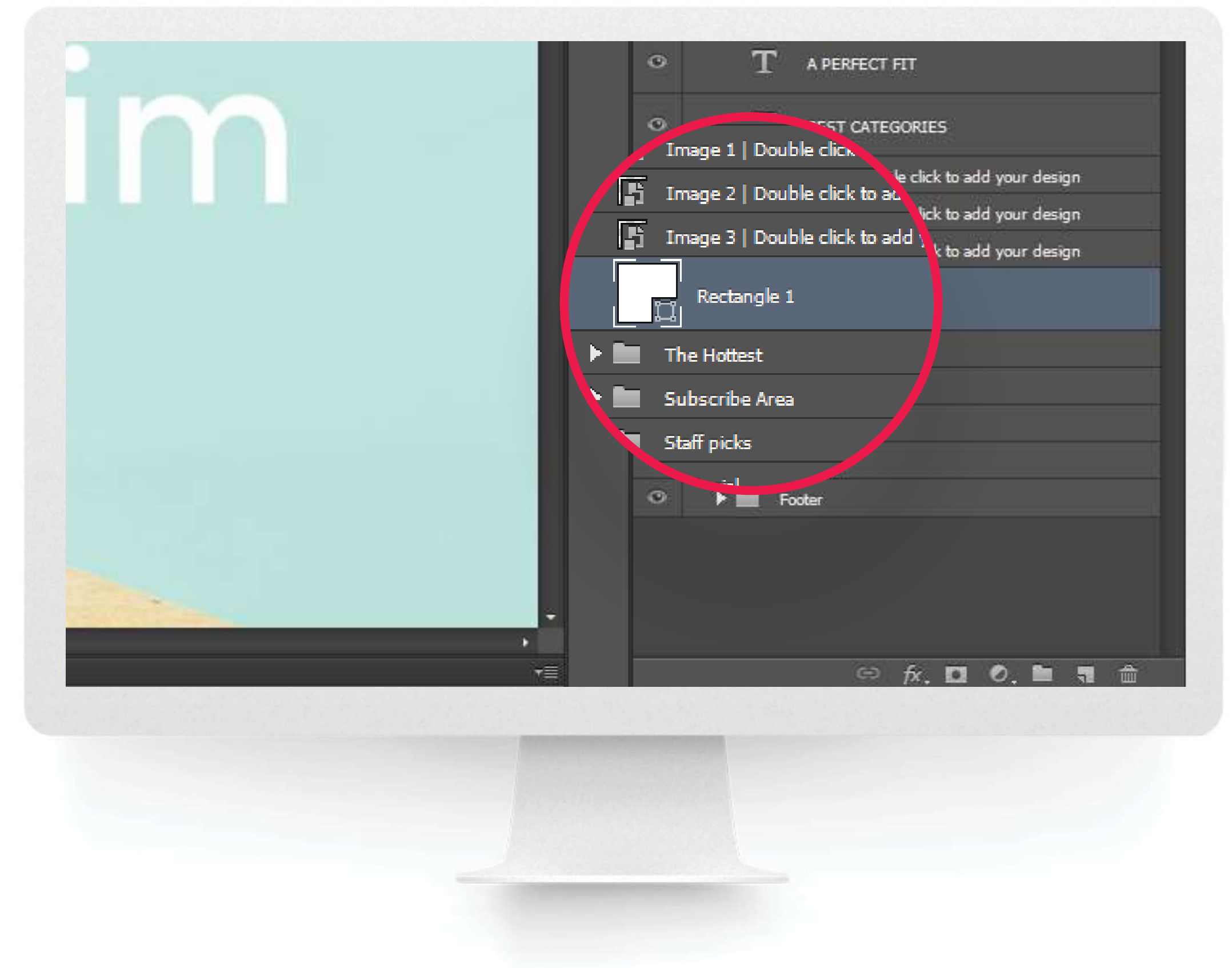
1. In the **Layers** tab, locate **the smart object layers** which are marked with the  icon, as shown in the example.
2. Once you located the smart object, double click on the icon. A **new window** will open in Photoshop, with the contents of your smart object.
3. Replace the contents in the smart object by placing a new image over the existing layer. To do this, go to **File > Place**. Select the image you want to place onto your new file, then click the **place** button.
4. After you are done editing your smart object click **save**. This is a temporary file, and will not save on your computer, but the changes will be made to your original .psd file. Keep in mind that this operation can be done as many times as you desire.
5. Check the original .psd file to see the changes you made.

HOW ABOUT A LITTLE COLOR?

HOW TO CHANGE COLORS OF SHAPES IN ADOBE PHOTOSHOP?

We like to keep things as customizable as we can, therefore we give you the opportunity to make color changes on the shapes found in our .psd files as shown in the guide below:

1. Locate the **shape layers** marked with the  icon as shown in the example.
2. Double click on the icon and notice that the **color picker dialog box** will appear on your screen.
3. Choose the preferred color then click okay.



LET'S GET IN TOUCH.

W'd like to learn more about your E-commerce business, so do not hesitate to contact us at any time at the link bellow:

<https://support.weltpixel.com/hc/en-us/requests/new>